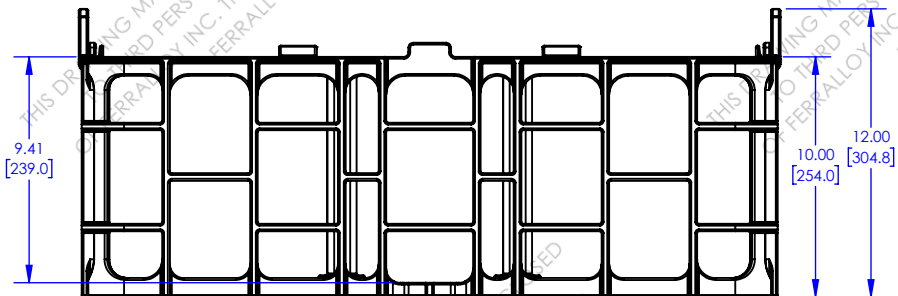
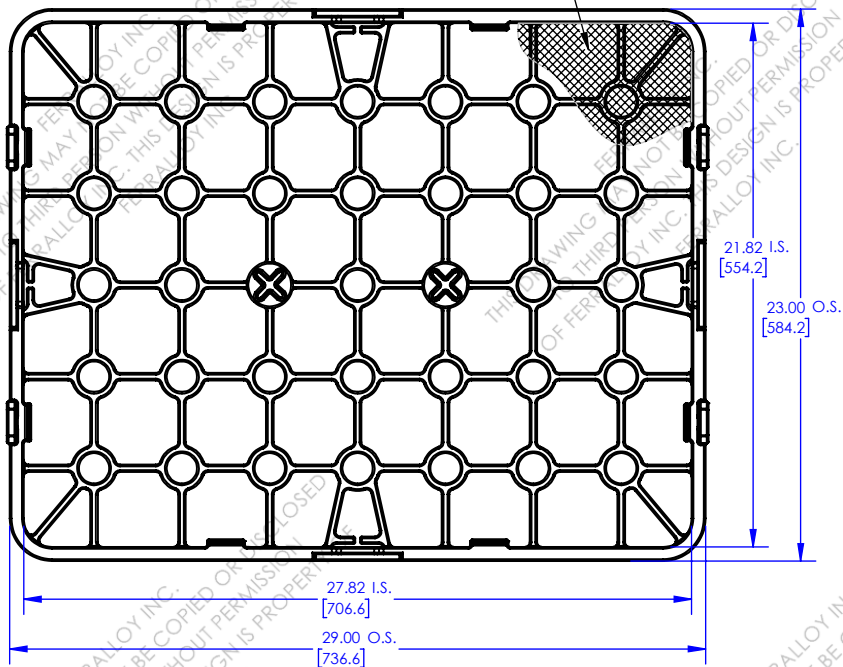
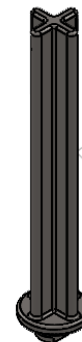
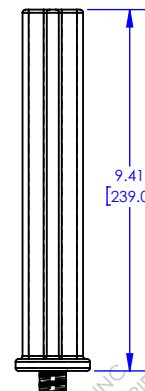
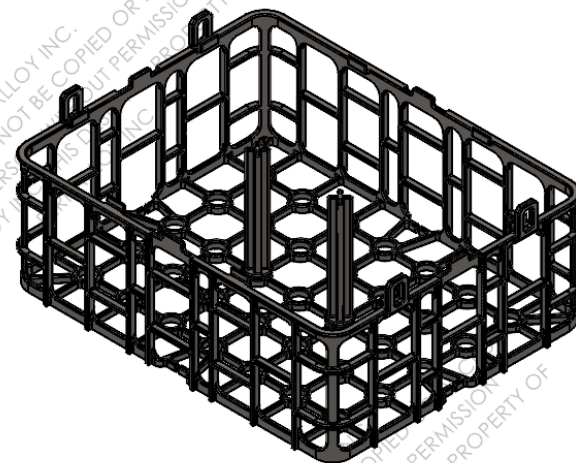


WIRE MESH LINER OR SCREEN (IF REQUIRED)
WITH CLEARANCE HOLES FOR POSTS



| REV | DESCRIPTION | Date |
|-----|-------------|------|
| | | |
| | | |
| | | |
| | | |
| | | |



CUT FLATS (2) SIDES OF POST THREAD
METRIC THREAD: 25.4 x 6.35

CAST POST DETAIL

NOTES

- 1) REMOVE BURRS AND SHARP EDGES.
- 2) UNSPECIFIED FILLETS & RADII R2-R5.
- 3) WIRE MESH LINER OR SCREEN, IF REQUIRED, TO HAVE CLEARANCE HOLES FOR POSTS.
- 4) CAST WEIGHT ~ 64lbs WITH POSTS.



| | | | |
|------------|-----------------|----------------------------------|--------------|
| MATERIAL | CUST DWG # | DESC. | |
| | | SureStack Basket 29" x 23" x 10" | |
| | DWG # | REV | WEIGHT |
| | FI-4097 | | 64lbs |
| Drawn: CMP | Date: 9/08/2022 | SCALE: 1:8 | SHEET 1 OF 1 |

| FEATURES SIZE OR LOCATION | TOLERANCE UNLESS OTHERWISE NOTED. DOES NOT APPLY TO STOCK SIZES. | |
|---------------------------|--|----------|
| | AS CAST | MACHINED |
| UNDER 24" | ±1/16" | ±.005" |
| 24" - 72" | ±1/8" | ±.010" |
| OVER 72" | ±3/16" | ±.015" |

NOTICE: THIS DRAWING AND THE RELATED ENGINEERING CONTENT CONTAINED HEREIN IS THE PROPERTY OF FERRALLOY, INC. IT MAY NOT BE COPIED, TRANSFERRED, PUBLISHED OR SHARED WITH ANY OUTSIDE PARTY BEYOND THE PARTY OR PARTIES FOR WHOM IT WAS PRODUCED.